

Hernando County Resource Map for Mom's and Families



KEY POINTS

- Does mom need a substance abuse assessment/evaluation?
- What state & local systems are involved?
- What level of service(s) have been recommended?
- What services have been tried in the past?
- Who are the right people to connect with?

Infant Developmental Assessment
Early Steps (0-3 yr.)
 Pat Califano pcalifa1@jhmi.edu
 (727) 767-4403

CONNECT
 Lynne Hough - LHough@wellflorida.org
 1-(877)-678-9355
 Please refer baby, even if Mom is enrolled in Healthy Start

ACCESS FLORIDA
 dcf-access.dcf.state.fl.us/access/index.do
 Robert Bradburn (352) 279-1962
 Robert.bradburn@myflfamilies.com

Levels of Mental & Behavioral Health Services

- Outpatient
- Intensive Outpatient
- Partial Hospitalization
- Emergency/Crisis Services
- Residential Treatment

Emergency /Detox/Treatment Assistance
Mobile Response Team
 24/7 Mental Health crisis response- up to age 24 yrs
 Call BayCare: (352)-467-OKAY (6529)
 Jenine Martin: jenine.martin@baycare.org

Emergency: 911
Poison Control Line: 1-800-222-1222
Suicide Crisis Line: 1-800-SUICIDE or 273-8255
Hernando County Sheriff's Office-
(Baker Act Immediate Crisis): (352) 754-6830

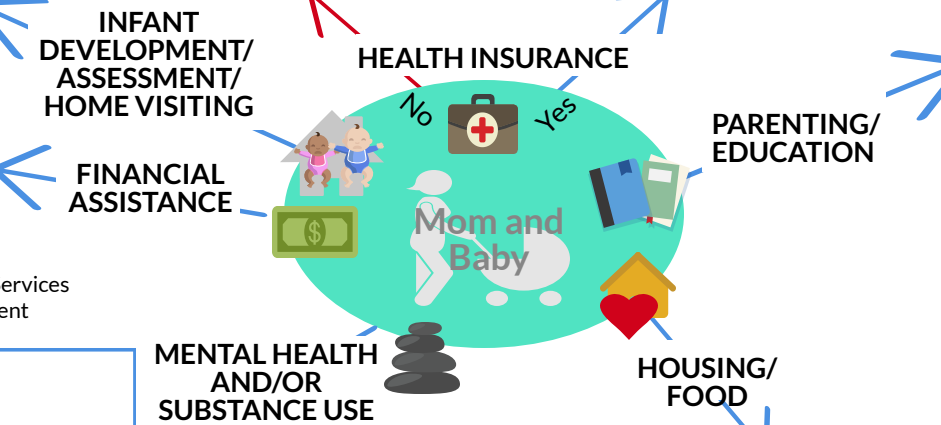
Detox/Treatment
 New Vision (if not pregnant): (352) 797-4649
 Springbrook Hospital: (352) 596-4306
 Spring Gardens: (866) 244-9556
 Operation PAR-MAT: (352)-666-5709
 BayCare: (866) 762-1743
 Financial Assistance Childcare: (727) 233-8291
 *** Financial Assistance May Be Available

Parent/Caregiver apply for:
 Medicaid
 Healthy Kids

Contact Lutheran Services FL
 • ACCESS to Care Line 1 (877) 229-9098

Health Insurance
 Contact health plan
 Medicaid Insurance (below)

Ask for behavioral health coordination through the health plan & search for providers



Housing Resources
Domestic Violence
 Dawn Center: (352) 686-8430

Human Trafficking
 More to Life (941)-227-1012 (Local)
 National: (888) 373-7888

Transitional Shelters
 Jericho Road: (352) 799-2912
 Mary's House (352) 799-2912 (no substance use)
 Life Center (352) 515-0119

Women and Infants WIC Program: (352) 540-6800

Breastfeeding: (352) 540-6924

CONNECT
 Lynne Hough
 LHough@wellflorida.org
 1-877-678-9355

Kids Central Inc.
Kinship Care and Child Abuse Prevention Services
 Michelle Mongeluzzo
 michelle.mongeluzzo@kidscentralinc.org
 352-387-3439

Healthy Start
 Dina Martinez
 Dina.Martinez@KidsCentralinc.org
 (352) 848-3747
 Serving pregnant woman and children under 3 years of age

Healthy Families
 Dana Selfridge
 dselfridge@pascokidsfirst.org
 (727) 247-8335

Obria Medical Clinic
 Pregnancy & Relationship Center
 Cheryl Bennett
 cbennett@purehope.org
 (352) 544-0911

Birth Control-Health Department
 (352) 540-6800

Food Assistance
 Catholic Charities: (352) 686-9897
 People Helping People: (352) 515-1663
 NorthCliff Baptist Church: (352) 683-5882
 Grace World Outreach: (352) 247-7883
 St. Vincent DePaul: (352) 688-3331
 Grace Presbyterian Church: (352) 683-2082

LOCAL (HERNANDO COUNTY AND CIRCUIT 5) CONTACTS

Department of Children and Families (DCF): Joelle Aboytes - *Circuit 5 Community Development Admin.* Joelle.Aboytes@myFLfamilies.com or 352-308-7320

Lutheran Services FL (ME) – Mental Health & Sub. Use Disorders: ACCESS to Care Line: 1-877-229-9098

Hernando CARES Behavioral Health Resource Guide: hernandocares.org

Hernando Community Coalition: www.hernandocommunitycoalition.org

Hernando Substance Exposed Newborn Taskforce - Information and Resources: www.hernandosen.org



EARLY CHILD CARE CONTACTS



Early Head Start – Mid Florida Community Services – Inclusion/Infant-Toddler Sp. - Denise Thompson: dthompson@mfc.us.com or 386-527-0559

Early Learning Coalition of Pasco-Hernando Counties - Inclusion Sp. - Elisha Perry: E.Perry@phelc.org or 727-233-8291 ext 120

MEDICAID HEALTH PLANS



To Switch Plans – Choice Counseling Main Line: 1-877-711-3662

Please be advised that phone numbers are subject to change.
Please visit the MMA Plan's member handbook

MMA Plans	24/7 Behavioral Health Coordination	Transportation
Florida Community Care	1-833-FCC-PLAN	1-833- FCC-PLAN
Humana Medical Plan	1-888-778-4651	LogistiCare 1-866-779-0565
Staywell	1-855-606-3622	Medical Transportation Management (MTM) Phone: 1-866-591-4066
Sunshine Health	1-866-796-0530	LogistiCare Reservations: 1-877-659-8420 Ride Assist (Where's My Ride?): 1-877-659-8421
Sunshine Child Welfare Plan	1-855-463-4100	LogistiCare Reservations: 1-877-659-8420 Ride Assist (Where's My Ride?): 1-877-659-8421
UnitedHealthcare	1-800-791-9233	1-800-791-9233